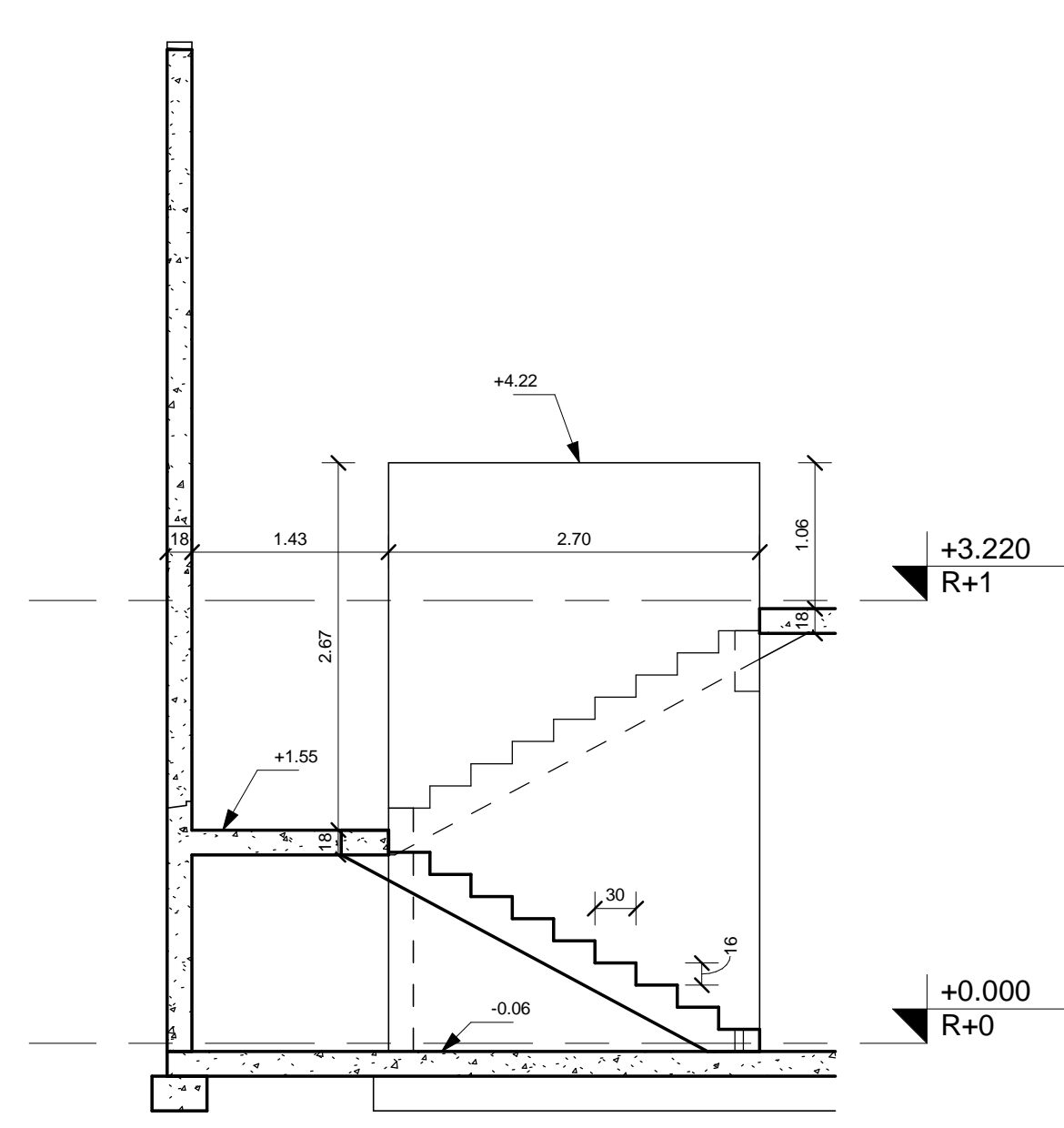
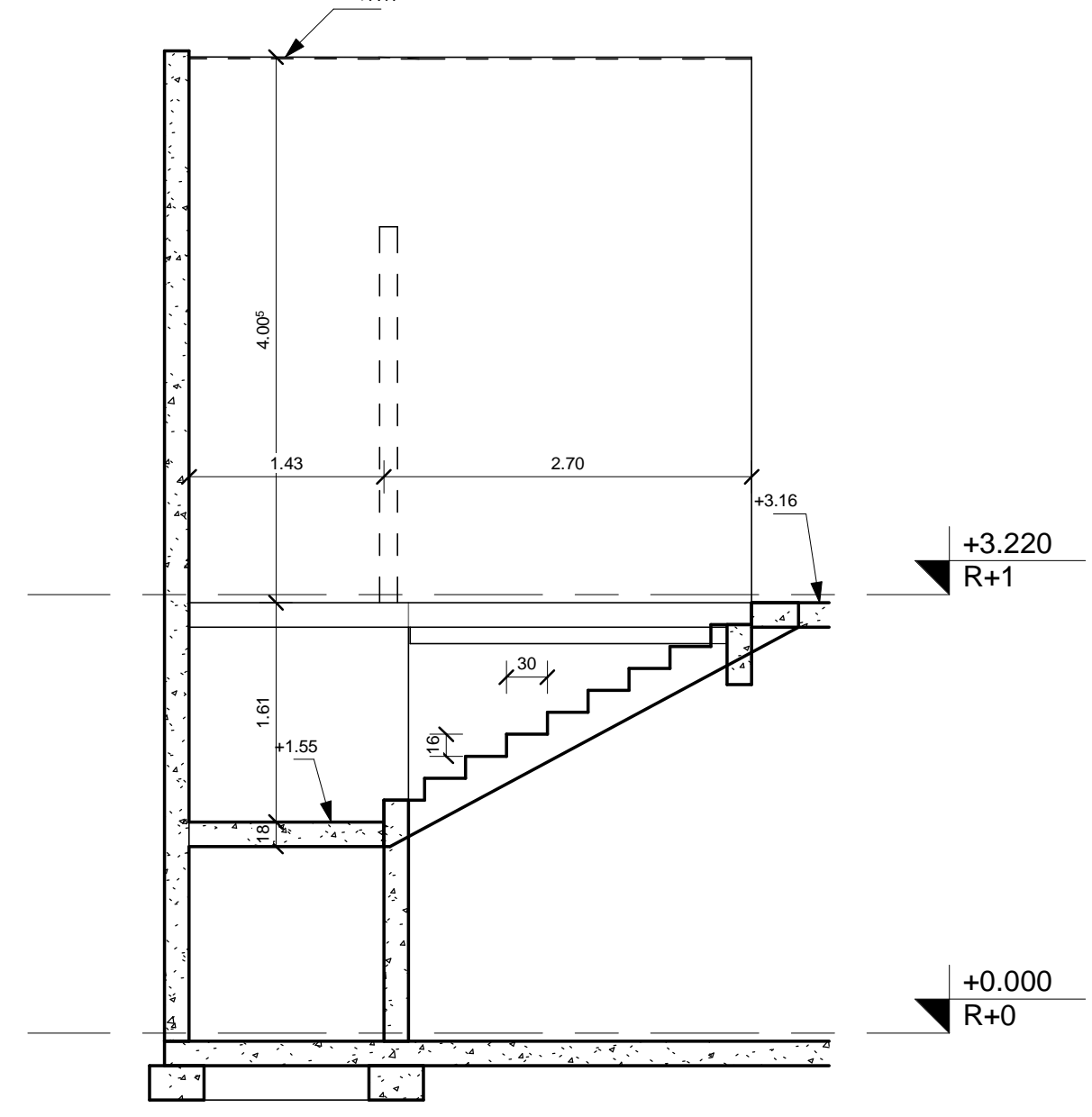


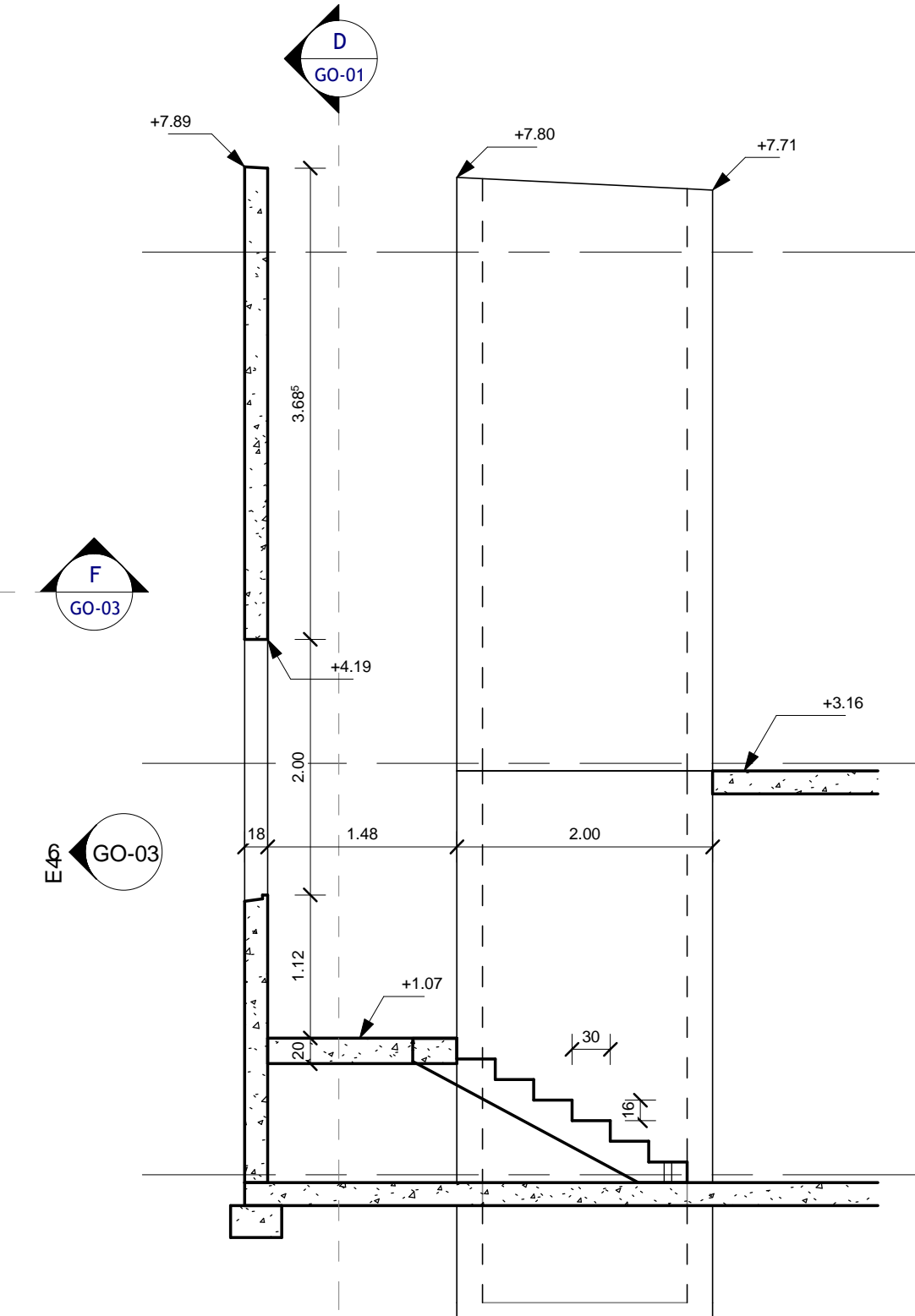
PH RDC  
1 : 50



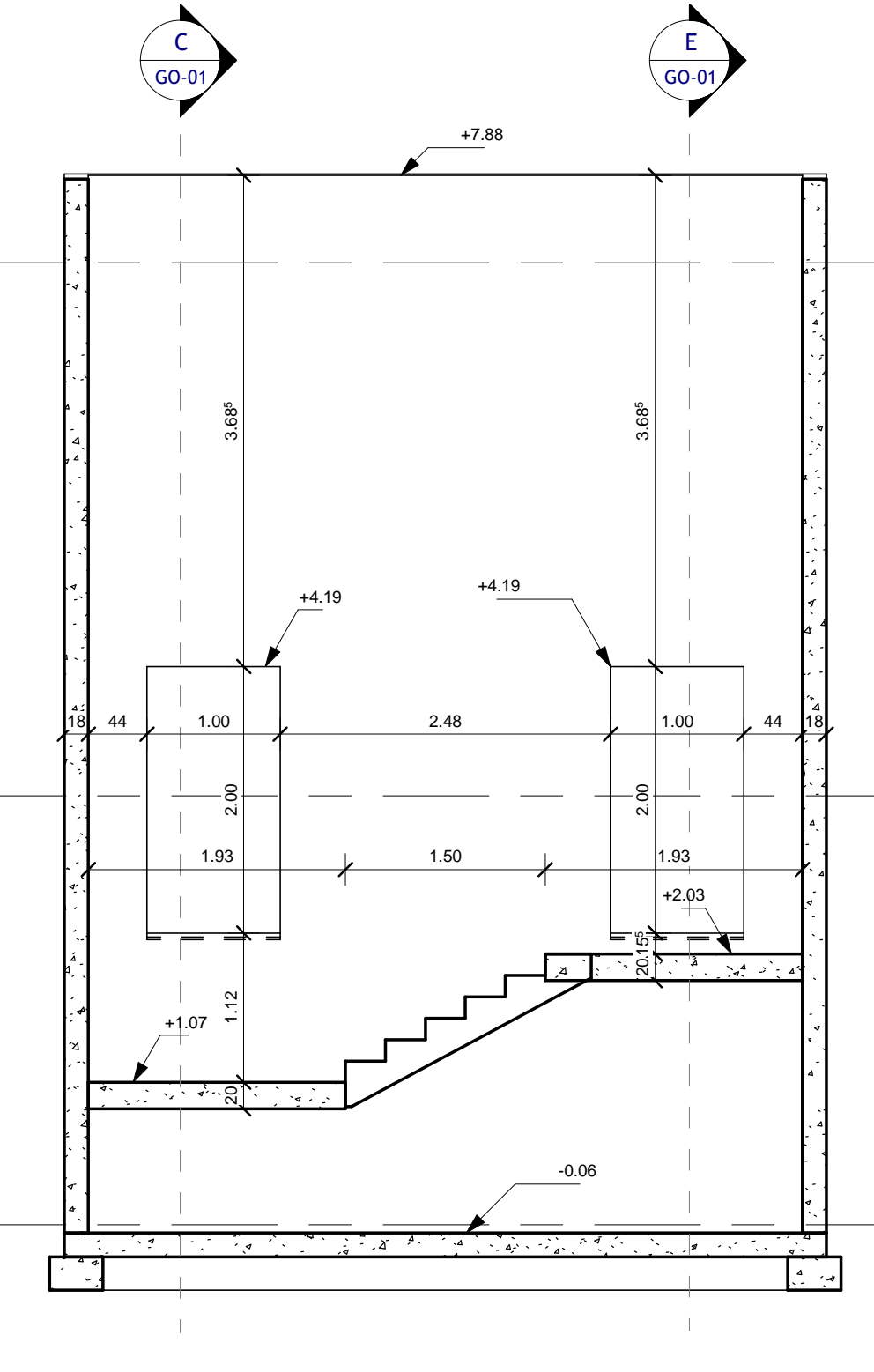
3  
1 : 50



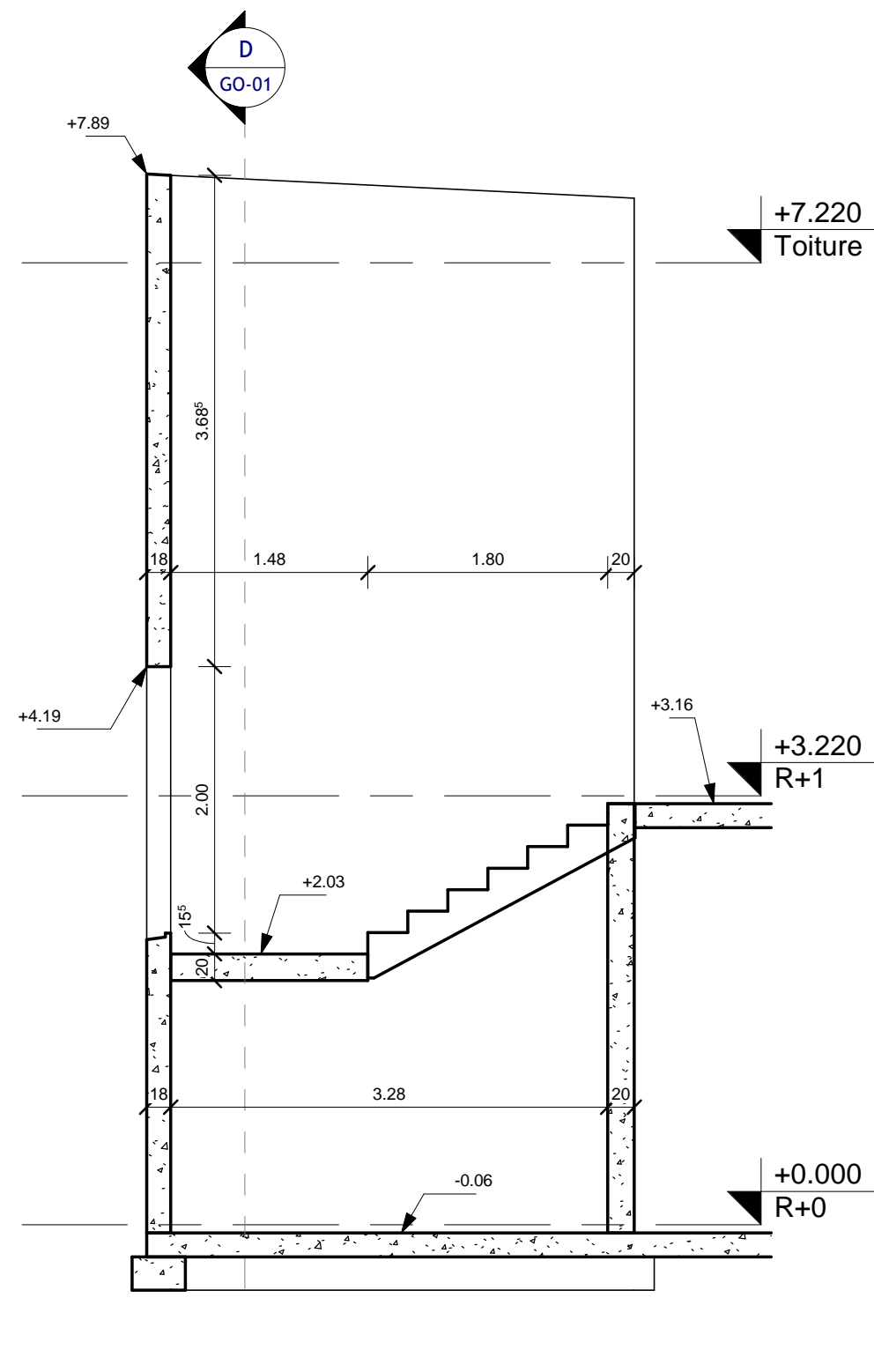
4  
1 : 50



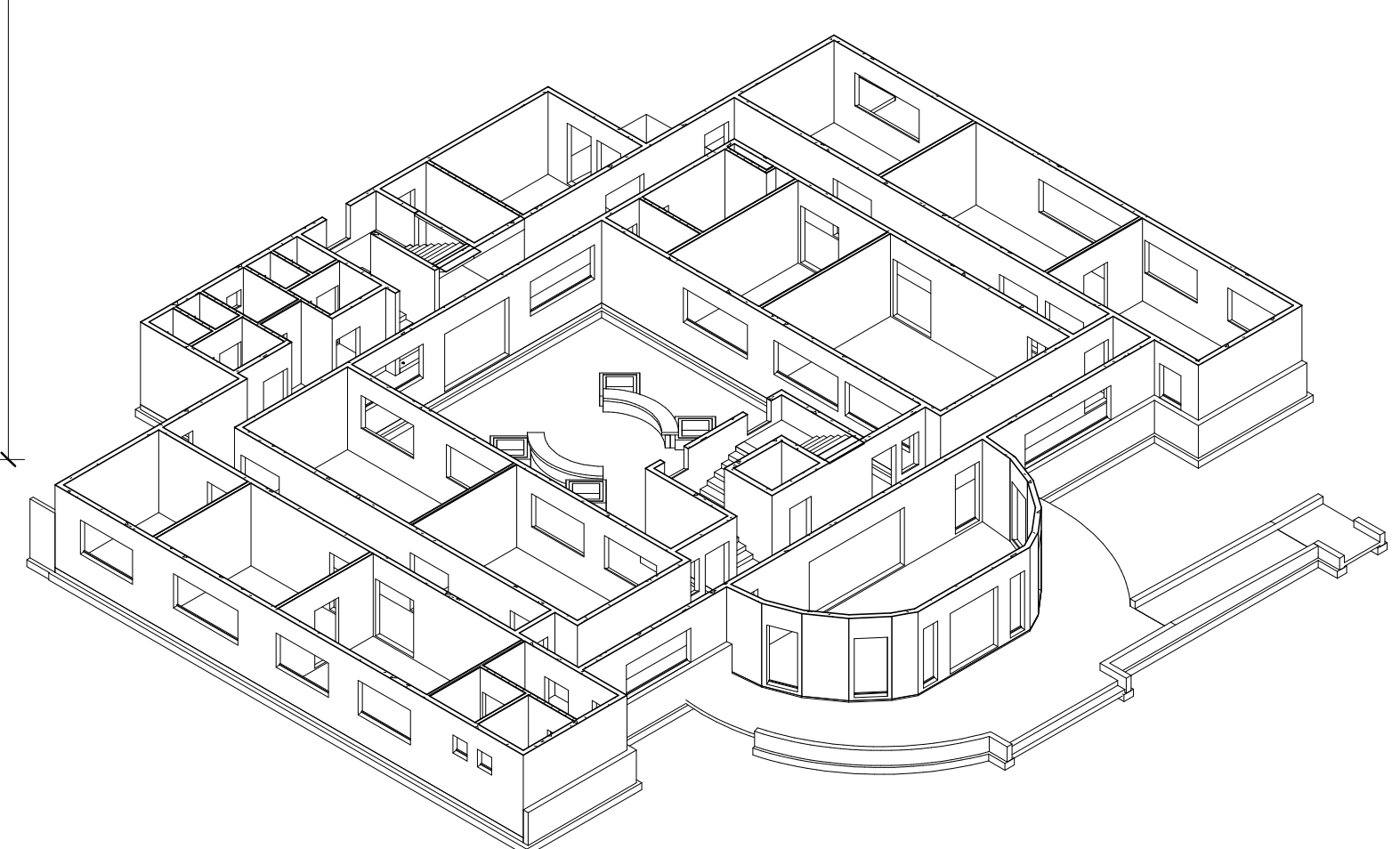
5  
1 : 50



6  
1 : 50




7  
1 : 50



NOTA: +0.00 = +20.72 NGW

LEGENDE	
HACHURES	DEFINITION
	Eléments porteurs BA
	Eléments en maçonnerie
	Murs pierres volcaniques
	Voiles du niveau supérieur
	Poteaux du niveau supérieur
	Maçonnerie du niveau supérieur

ILES DE WALLIS & FUTUNA

MAÎTRE D'OUVRAGE :  CONDUCTEUR D'OPERATION : 


**Démolition et reconstruction du bâtiment administratif de l'Assemblée Territoriale de Wallis et Futuna**

**DOSSIER DE CONSULTATION DES ENTREPRISES**

**GO-01**

NOVEMBRE 2025

**DCE**



**PLANCHER HAUT RDC**

Modifications: \_\_\_\_\_

Ech: 1/50e

